

# Trimmer

## Company profile

Established in 1979, in only a few years TRIMMER has established a leader position in Italy specializing in preparation, treatment, regeneration and maintenance of surfaces.

Resulting from constant research and application of advanced technologies, TRIMMER produces and markets throughout Italy and the world a complete line of machines and equipment which are widely employed in the industrial, civil, road, airport and marine industries.

Located in Castelnovo Bocca D'Adda, in the province of Lodi, TRIMMER facilities occupy 7000 square meters of which 3200 square meters are allocated to offices, research and development, production, warehouse, maintenance machine shop, show room and extensive demonstration grounds.

Sales are handled directly as well as through agents and distributors while qualified technicians are available for consultancy for particular problems.



## TRIMMER SERVICES

### Sales

Directly and through a specialized sales network, TRIMMER presently operates on the entire Italian market as well as abroad. Ample in house demonstration facilities permit potential clients to fully trial test any equipment prior to finalizing a purchase. The majority of machines and spare parts are available from stock and, within forty eight hours from order and finalization of purchase, replacement parts can be promptly shipped to their destination.

### Rental

In addition to manufacturing and trading, TRIMMER offers rental possibilities either directly or through official TRIMMER rental points "PUNTONOLO TRIMMER" located in the major cities of Italy. Perfectly functioning equipment is available for long or short term rental - even one day only. Upon request the machines can be supplied with operator.

### Consulting

Particular, unusual or very specific surface preparation problems often arise. TRIMMER technicians are amply qualified for evaluating such circumstances in each individual case, and subsequently providing special solution. These solutions are studied in house or individualized directly on site according to necessity.

### Research

Equipped with modern computerized instruments, TRIMMER's in house staff is continuously employed in the research and development of advanced technologies and solutions for surface preparation applications. It is not unusual that such research evaluation is done directly on a job site in order to fully comprehend the type of problems which occur and which subsequently require solutions.

### Services

TRIMMER's in house machine shop is amply equipped for prompt repairs and machine over hauling services. When necessary, and if possible, upon request TRIMMER technicians can intervene directly on site for urgent repairs in order to limit machine down time to a minimum. Supply substitution of equipment while is possible the client's machine undergoes the necessary repairs.

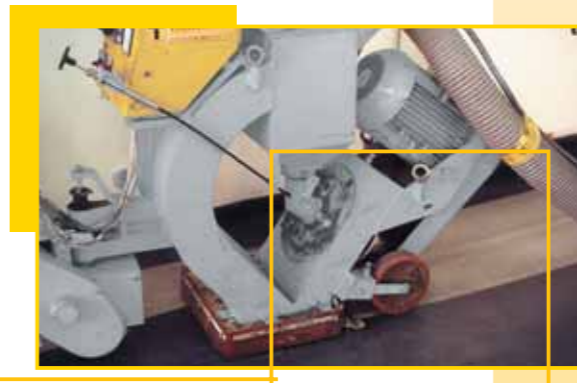


# Trimmer

26843 CASTELNUOVO B. A. (LODI) ITALY  
Via Piave, 47 ( z.i. ) Tel. +39 0377.700125 Fax +39 0377.60681  
Uff. Amminist./Uff. Estero Fax +39 0377.702614  
<http://www.trimmer.it> e-mail: trimmer@trimmer.it

# Trimmer

## SURFACE PREPARATION SYSTEM



## SELF PROPELLED RECOVERABLE DRY ABRASIVE SURFACE PREPARATION MACHINES AND EQUIPMENT FOR CLEANING RESTORING AND TEXTURING CONCRETE ASFALT STEEL BRICK CERAMIC TILE SURFACES



# shot blasting machines



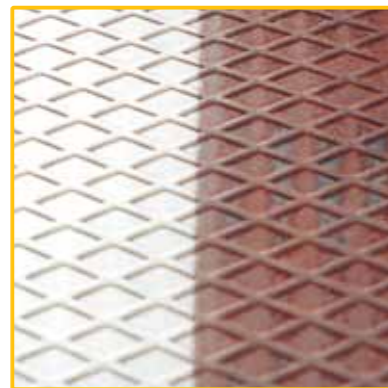
# Trimmer

# shot blasting machines

SELF ENCLOSED DUST FREE SHOT BLASTING SYSTEM  
 SELF PROPELLED RECOVERABLE DRY ABRASIVE SURFACE  
 PREPARATION EQUIPMENT



A self enclosed portable shot blasting system, TRIMMBLAST machines and equipment represent a qualified and modern approach to correct surface preparation.



The surface to be prepared is impacted and abraded by steel abrasive being propelled at high velocity. Abrasive and debris removed pass through a separator. Pulverized abrasive media, dust and contaminants are

removed and the re-usable abrasive is returned into circulation for immediate re-use, while the debris is deposited in an environmental container for future disposal in the proper place.

# shot blasting machines

## Pollution free shot blasting machines



Different applications require different surface profiles. A variety of steel abrasive sizes are utilized to produce a controlled and uniform surface texture ranging from a light profile to a relatively deep etch. Speed is also a contributing factor to the profile requirement and result. Thanks to visible steel manometers, the system is totally controllable at all times as to advancement speed, quantity and type of abrasive to be used.

TRIMMBLAST is a totally neutral and dry system providing the best adhesion for subsequent toppings to be applied.



Insomuch as there is no water involved, immediate coating is possible after preparation. Other harmful risks and hazardous fumes are eliminated as there are no chemicals involved. TRIMMBLAST is practically pollution free. Old coatings, paints, rust, contaminations and concrete latents may be removed in one step from old or newly poured concrete surfaces.

TRIMMBLAST is also highly effective on steel surfaces. The system has found an equally specific application for demarking on roads, highways and in airports, allowing for removal of sign paint without excessively weakening the asphalt or concrete. Rubber deposits are easily removed in a short time from airport runways. Because of the many advantages of dry surface treatment, TRIMMBLAST is highly cost effective while maintaining maximum technological results.

### SOME FIELDS OF APPLICATIONS

Industrial flooring cleaning and texturing, removal of old coatings, paint, rust, exposing aggregates, refurbishment of old concrete floors, providing non-slip surfaces, rubber deposit removal, road sign removal, excess bitumen removal providing non-skid road surfaces, various applications in air craft hangers, various applications in cold storage areas, various applications in food, meat, poultry and dairy processing plants, off shore platforms, walkways and helidecks, parking garages loading ramps, shopping malls, pedestrian crossings, bus depots, storage warehouses, engineering workshops, steel plates, bridges decks.

